

PERIMETER

Protection Products

Smarter. Safer. Leaner.

- Fast Installation and Removal
- Decrease Leading Edge Exposure by 87%
- OSHA Compliant
- Versatile and Reusable



*This Dinosaur is
Costing You Money!*

Use Perimeter Protection Posts During Construction:

- At Building Perimeter Between Columns
- At Building Perimeter at Roof Level
- Around Elevator Shafts
- Around Stair Well Openings

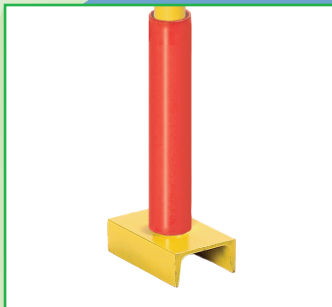
Perimeter Fall Protection Re-Engineered



The only perimeter fall protection with a proprietary thread-round-nut system. Ours is the safest, most economical, most green, most flexible system in the world that works with steel, concrete and wood construction.



Patented locking cable guides adjust to any position. Accepts cable up to 1/2" diameter.



Optional plastic tubing allows for easy removal even after concrete pour.



Unique thread makes post easy to install and remove. Base plate with shouldered coupler provides stability and strength.

- 42", 54", 60" and 72" posts available
- OSHA compliant—supports 200 lb. side load and provides 5,000 lb. tie-off point
- Fast installation & removal
- Posts reusable on future projects
- No tools required
- Weld base plates at fabrication facility or in field
- Base plates remain as permanent fall arrestor system for building

CORNER BRACE UNIT

Swivels to adjust to any angle, and can be used for straight long-run stability, as well as corners. Transfers tension loads back into building.

Part No. 1965-80 (42")

Part No. 1965-85 (60")

Also available in 54" (Part No. 1965-610) and 66" (Part No. 1965-650) Adjustable Posts with Cable Tie-Offs



Part No. 1965-10

All Patents Pending

The Heart of the PPP System: Our Innovative, Versatile, Reusable Posts

STANDARD POSTS

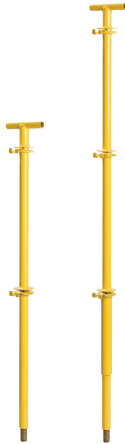
42" post provides protection with top wire height at 42 inches. Cable supports at 42" and 21".

60" post provides additional protection with top wire height of 60 inches. Cable supports at 60", 42" and 21".

Both posts can be used as a tie-off point at or below 22 inches.

Part No. 1965-10 - 42"

Part No. 1965-15 - 60"



54" POST with ADJUSTABLE CABLE GUIDES

Features adjustable cable guides. As deck and slab increase in height the cable guides are moved higher to maintain the OSHA 21"/42" standard. Top Handle is removable to accommodate for a D-ring or Toe Board accessory.

Part No. 1965-605

Also available in 66" (Part No. 1965-640)



72" BIG FOOT

Designed for use with an HLL that can run 60'. It has the ability to receive cable at 21" & 42", plus a provision for wood bracket attachments. When post is extended it allows for a 6' HLL.

Post attaches into embeds with a heavy duty bolt and expansion anchor.

Part No. 1965-600

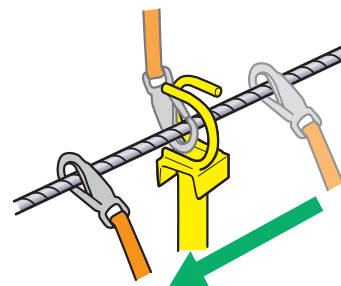


39" ERECTING POST WITH PASS-THRU

This allows a 100% tie-off point during the erection phase. Innovative design eliminates the need to disconnect from "life line".

Part No. 1965-145-B

Also available 39" Erecting Post with D-Ring (Part No. 1965-145-A)



**Never
Disconnect
From Life Line
Again!**

**These are the only tools needed to
install and remove PPP Posts.**



RED HANDLE W/BUILT-IN SOCKET WRENCH

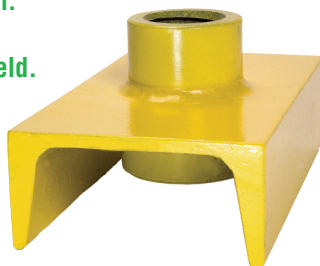
This is provided on our 54" and 66" Adjustable Posts and Corner Posts and is used to move the cable guides up and down to accommodate the 21" and 42" height. (One red handle included with every 25 posts ordered)



Base Plates for Use in Steel Construction...

STANDARD BASE PLATE

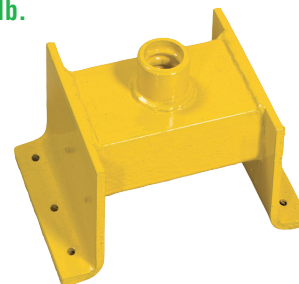
For use in steel construction. Welded to steel beams in fabrication shop or in the field. Allows for easy removal and re-use of posts.



Part No. 1965-20 (ships unpainted)

STEEL DECK BASE PLATE

A versatile and mobile 5,000 lb. tie-off point that requires no welding. Fits over steel decking and attaches with TEK® # 5 screws directly into a 1/4" or thicker steel beam.



Part No. 1965-185

BAR JOIST ATTACHED BASE PLATE

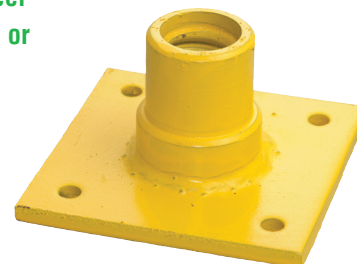
A versatile, mobile and mechanically attached 5,000 lb. tie-off point that requires no welding and is easily installed wherever bar joist construction is used.



Part No. 1965-210

PRE-CAST BASE PLATE

Designed for use in a steel application to be welded or installed with TEK® # 5 Screw.



Part No. 1965-615 (ships primed)

*Which is Faster,
Safer, and Less
Expensive?*



Visit our web site for a video demonstration
www.perimeterprotectionproducts.com

ELONGATED UNDER MOUNT BASE PLATE

Designed to be mounted under flange of I-Beam and positioned on the interior side of building to continue to allow for uninterrupted building closure while eliminating any tripping hazards from the surface of the beam.



Part No. 1965-170 (ships unpainted)

ADHESIVE ATTACHED BASE PLATE KIT

It comes as a kit and includes (2) base plates, (2) D-Rings and (2) Epoxy Packets. After prepping both surfaces and applying the epoxy adhesive, this system provides a 5,000 lb. anchor point that is chemically attached.



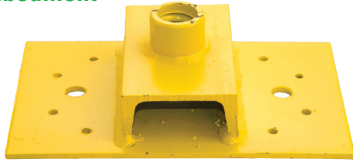
Part No. 1965-360

...plus Wood and Concrete Applications

MULTI-USE BASE PLATE

Can be attached using fasteners to secure it to:

- wood blocking at roof level
- existing concrete structures
- concrete framing for embedment in concrete when the pour will be 5" or less



Part No. 1965-55

WALL ATTACHED

Can be welded or attached to an existing wall using fasteners.



Part No. 1965-140

DECK MOUNT CONCRETE EMBED

Screws into plywood with no tools required. Comes with screw attached and rubber cap for fast installation.

(Customer needs to specify depth of pour)

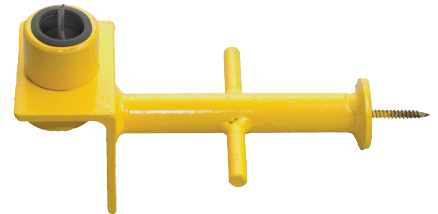


Part No. 1965-475 (ships primed)

CONCRETE POUR STOP EMBED

Screws into the pour stop at the required height.

Rubber caps are included.



Part No. 1965-485 (ships primed)

CONCRETE WIRE EMBED

For use in a pre-cast or pour in place application. It may be used in a vertical or horizontal plane.

The wire leg height will be per customer's requirements.



Part No. 1965-490 (ships primed)

DOUBLE ENDED EMBED

Designed to attach to the plastic chair. It provides access at both the floor for use with the post and the ceiling using our HD-Ring at the lower floor for a lifeline.

(Plastic chair/screws not included).



Part No. 1965-510 (ships primed)

REBAR EMBED

4 x 4 x 1/4" base plate with a total height of 3". For use in pre-cast concrete or poured in place. Consideration must be taken into account when configuring rebar, slab depth and p.s.i. of concrete. The tubes attached are for #4 rebar lacing.



Part No. 1965-525 (ships primed)

CONCRETE WIRE EMBED 4-LEG

Designed for use in a concrete pour, made to height dimensions specified, with rubber tips included.



Part No. 1965-670 (ships primed)

Versatile Protection Where It's Needed

PARAPET CLAMP "SLAB GRABBER"

Can be attached to parapet walls or rotated and attached to edge of concrete slabs. Accommodates walls and floors from 6" to 14" thick.



Part No. 1965-110

SLAB CLAMP FOR WOOD RAILS

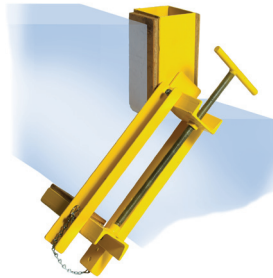
Provides the ability to control the height of slab grabber using a 4 x 4 wood post. (Brackets included)



Part No. 1965-290

ARTICULATING CONCRETE STAIR CLAMP FOR WOOD POST

Can be installed on concrete or wood stair riser. The attachment is accomplished with compression. (Brackets included)



Part No. 1965-340

METAL STAIR CLAMP

Attaches to the stair stringer. The clamp is compression type designed for 30-45 degree stair angle. It will attach left or right side. (Brackets included)



Part No. 1965-320

I-BEAM CLAMP

Designed for use on bridge structures. Allows attachment to steel I-beam without welding or drilling. Accommodates I-beams from 8" to 12" wide and up to 1" thick.



Part No. 1965-130

DIAGONAL CABLE CLAMP

For use with the 39" Erecting Post or Beam Clamp (if no column is available for support).



Part No. 1965-300

CLAMP ON CORNER BRACKET FOR WOOD RAILS

Clamps onto our standard posts. Will accommodate 2 x 4, 2 x 6, 2 x 8, 2 x 10 and 2 x 12 boards.



Part No. 1965-280

TOE BOARD ATTACHMENTS

Slide or clamps onto our standard posts for quick installation and removal of toe board. Will accommodate 2 x 4, 2 x 6, 2 x 8, 2 x 10 and 2 x 12 boards.



Clamp On: Part No. 1965-60-C

Slide On: Part No. 1965-60

A Full Line of Integrated Accessories

FALL ARRESTORS

Screw into base plate to provide 5,000 lb. load tie-off point. Can be used during construction on all levels, and after construction on roof.



Part No. 1965-30 (with support for roof)
Part No. 1965-35 (without support)

WALL ATTACHED HEAVY DUTY D-RING FALL ARRESTOR 6" SHAFT

D-Ring screws into base plate to provide a 5,000 lb. tie-off point. Can be used during construction phase on all floor levels and on the roof following construction.



Part No. 1965-35-HD
Also available with 10" shaft (Part No. 1965-260)

CLAMP ON D-RING

D-Ring attaches to our standard posts at the maximum height of 22". It may be used as a tie-off if base plate or embed are installed to support a 5,000 lb. load.



Part No. 1965-240

BEAM ANCHORED CABLE SUPPORT

Patented cable support clip provides alternative to welding a nut or washer to columns on lower floors. Attaches to structure using standard Tek® #5 screws, concrete fasteners, or by welding in place. Accepts cable up to 1/2" diameter.



Part No. 1965-70

COLUMN CABLE TIE-IN

Designed to be attached to square tube columns at the corners to accommodate angle changes in the cables.



Part No. 1965-220

WOOD RAIL BRACKET

This bracket was designed to attach to a concrete or steel column. It will accommodate both 2 x 4 and 2 x 6 boards.



Part No. 1965-215

CLAMP ON CABLE GUIDE

Designed for additional cables. Can be attached at zero cable height for debris nets.

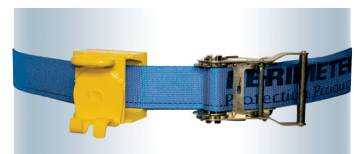


Part No. 1965-540 (ships primed)

COLUMN STRAP ANCHOR SYSTEM

Designed to jump or isolate bays. It can be used for round, square or rectangular masonry columns.

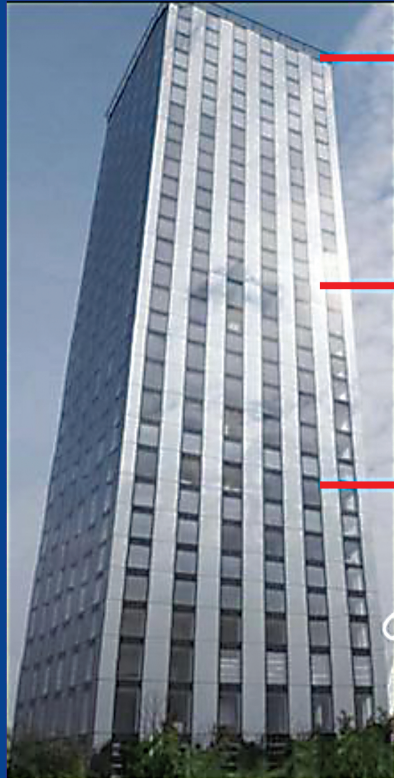
The strap is fitted with a cable fitting.



Part No. 1965-668

Faster, Safer, *and* Less Expensive

Re-Use of Posts Within a Project—Materials Savings



**30 Stories, 720-foot
perimeter**

**3rd Ten Floors
(Baseplates)**

Cost

\$11,080

**2nd Ten Floors
(Baseplates)**

\$11,080

**1st Ten Floors
(Posts/Baseplates)**

\$68,440

Did you know? PPP is the *only* perimeter protection company that customizes its products for a customer's specific needs.

Call Today for a Customized Quote: 732-469-5626

720 Lincoln Boulevard
Middlesex, New Jersey 08846
732-469-5626 • Fax: 732-271-9460

www.perimeterprotectionproducts.com

PERIMETER
Protection Products
Smarter. Safer. Leaner.